

Community Garden Exchange

A FREE EVENT FOR COMMUNITY FOOD GARDENERS

Presented by



Western Pennsylvania
Conservancy

SWAP
STORIES
SKILLS
SEED

APRIL 9TH
MILLVALE COMMUNITY CENTER
416 Lincoln Avenue
Millvale, PA

10am

General Meeting and Potluck Brunch

12:30 - 4:30pm

Community Garden Skill Shares
(schedule on back)

POTLUCK BRUNCH



KIDS ACTIVITIES



VOLUNTEER
OPPORTUNITIES

contact Marisa at
Grow Pittsburgh
412-362-4769

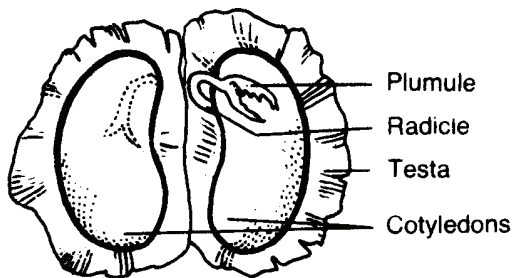
YOU ARE INVITED TO BRING:
a dish to add to the brunch table
leftover or saved seed (see back for more info)
pictures of your community garden to display

For more details, visit www.growpittsburgh.org
or call 412-362-GROW.



SEED SWAP

Bring leftover or saved seed to swap with other gardeners.



LABELLING INSTRUCTIONS

Please label your seed so others will know what they're getting.

SAVED BY

CROP

VARIETY

MONTH/YEAR SAVED

SAVED/PURCHASED

OP/F1

ORGANIC/CONVENTIONAL

HOW TO DO A GERMINATION TEST ON OLD SEEDS

If you have a packet or two of seeds lying around from the past few gardening seasons, don't dump them in the trash without first checking to see if the seeds are still good. Seeds often stay viable long past the expiration date stamped on the seed packet, though viability depends on the type of seed and how it was stored. To find out if your seeds are worth planting, all you need to do is a simple germination test. Here is how.

1. For each packet of seed, you will need one paper towel and one sealable plastic bag. To start, moisten the paper towel and then fold it in half to form a double layer.
2. Place 10 seeds (from the same packet) in a line on one half of the towel. Then, fold the other half of the damp paper towel over the line of seeds.
3. Carefully slide the towel into the plastic bag and seal the bag $\frac{3}{4}$ of the way.
4. Check on the towel daily. Keep it evenly moist. After a week to 10 days has past, pull the towel out of the bag, unfold it and count how many seeds germinated. If all of the seeds germinated (10 out of 10), then you have a perfect germination rate. If only nine seeds germinated then you have a germination rate of 90 percent, and so on.
5. If the germination rate falls between 60 to 100 percent go ahead and plant the seed. Just sow a little heavier than normal to make up for the seeds' reduced viability. If less than 60 percent of the seed germinated, take a trip to the nursery and buy a fresh pack of seeds.
6. After you complete the germination test, you can plant any seeds that sprouted. Just be sure to handle them carefully so you do not break their tender, new roots.

SKILL SHARE SCHEDULE

-
- 12:50 - 1:10 Troy Hottle, GTECH - Soil Building for Community Gardens
 - 1:10 - 1:30 Lauren Seiple, GTECH - Composting for Community Gardens
 - 1:40 - 2:00 Terry Doloughty, Polish Hill Civic Assn. - Creative Water Systems
 - 2:00 - 2:30 Coffee Break
 - 2:30 - 2:50 Leah Smith, PASA - Seed Saving
 - 2:50 - 3:10 Susanna Meyer, Grow Pittsburgh - Pest ID and Management
 - 3:20 - 4:00 Marisa Manheim, Grow Pittsburgh - Successful Community Gardens